

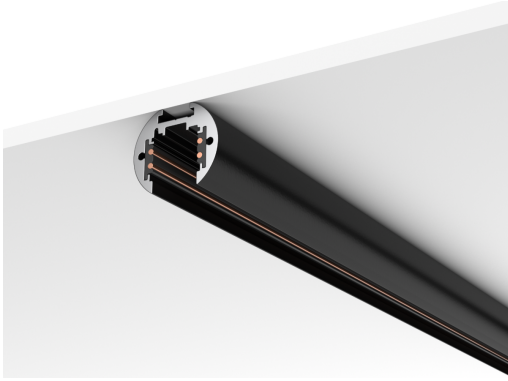
Surface Mount Mini-Track

O Series

Project:

Type:

Contact:



K M20

— —

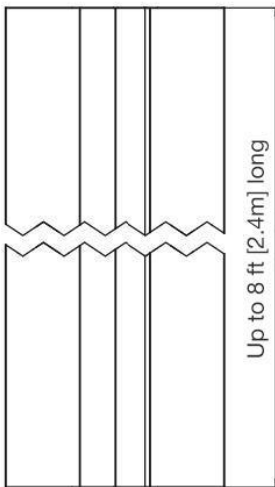
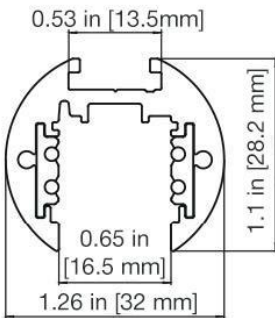
— —

MODEL	Track Length	Color
M20: Mini-Track O	04 : 4 FT 08 : 8 FT	W00 : White B00 : Black

Notes:

Drivers are designed with universal input voltage compatibility, accommodating a range from 120V to 277V.

DIMENSIONS / DRAWINGS



Product Overview

Type: Round Surface Mount Mini-Track O

Circuit(s)/Amps: 2 circuits: 2x +/- 15A/0-60V dc or 1 circuit + Data Bus: +/- 10A/0-60V + D+/D-

Voltage: 24V/48V

Weight: 1.01 lb. [459g] / ft / 1506.2g/kg

Available Colors: Black RAL 9005 embossed / White RAL 9016 embossed

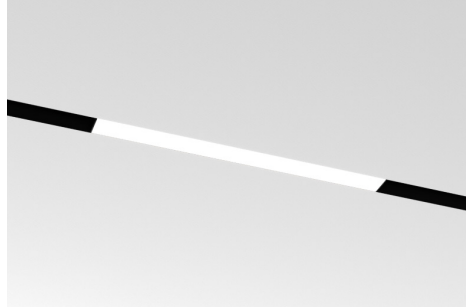
Driver: DALI 1% dim, 0-10V 1% dim, Forward/Reverse Phase Cut dim

Compatible Track Lighting

Linear: 90+ CRI, 3000K



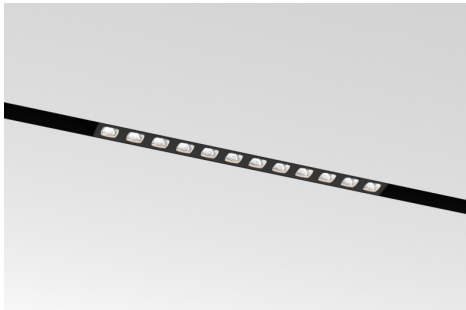
L1-RIGAJO



L1-RIGMO



L1-RIGAJ



L1-RIGMU

WEIGHT	RIGAJO	RIGMO	RIGAJ	RIGMU
12 in	0.81 in	0.42	0.9	0.48
24 in	1.34 in	0.7	1.5	0.86
34 in	1.94 in	1.0	2.2	1.3
45 in	NA	1.3	NA	NA
56 in	NA	1.6	NA	NA

VOLTAGE	RIGAJO	RIGMO	RIGAJ	RIGMU	LUMEN/FT	RIGAJO	RIGMO	RIGAJ	RIGMU
	48V	48V	24V	24V		495	495	510.5	510.5

ADJUSTABLE	RIGAJO	RIGMO	RIGAJ	RIGMU	LUMEN/FT	RIGAJO	RIGMO	RIGAJ	RIGMU
	Yes	No	Yes	No		6W	6W	5.4 W	5.4W

Compatible Track Lighting

Pendant: 80+/90+ CRI, 2700K/3000K/3500K/4000K/Amber



PO-TI

Voltage: 24V/48V
Lumens: 291lm(3W), 493lm(7W)
Length: 12in/18in/24in/36in/48in
Weight(12in): 0.537lb.

Track Heads: 80+/90+ CRI, 2700K/3000K/3500K/4000K/Warm Dim



K0-GEM20



K1-GEML2



K0-GEM4R



K1-GEML4



K1-GEL6R

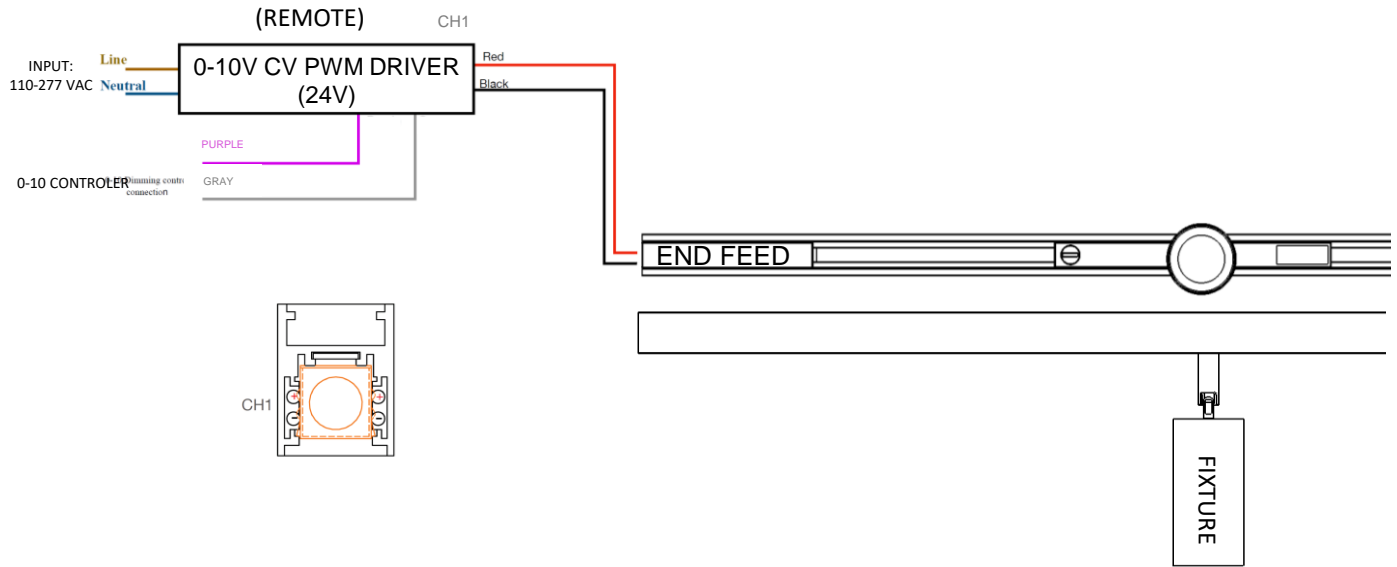
Voltage: 24V

WEIGHT(LB)	GEM20	GEML2	GEM4R	GEML4	GEL6R
	0.319	0.392	0.352	0.515	0.585

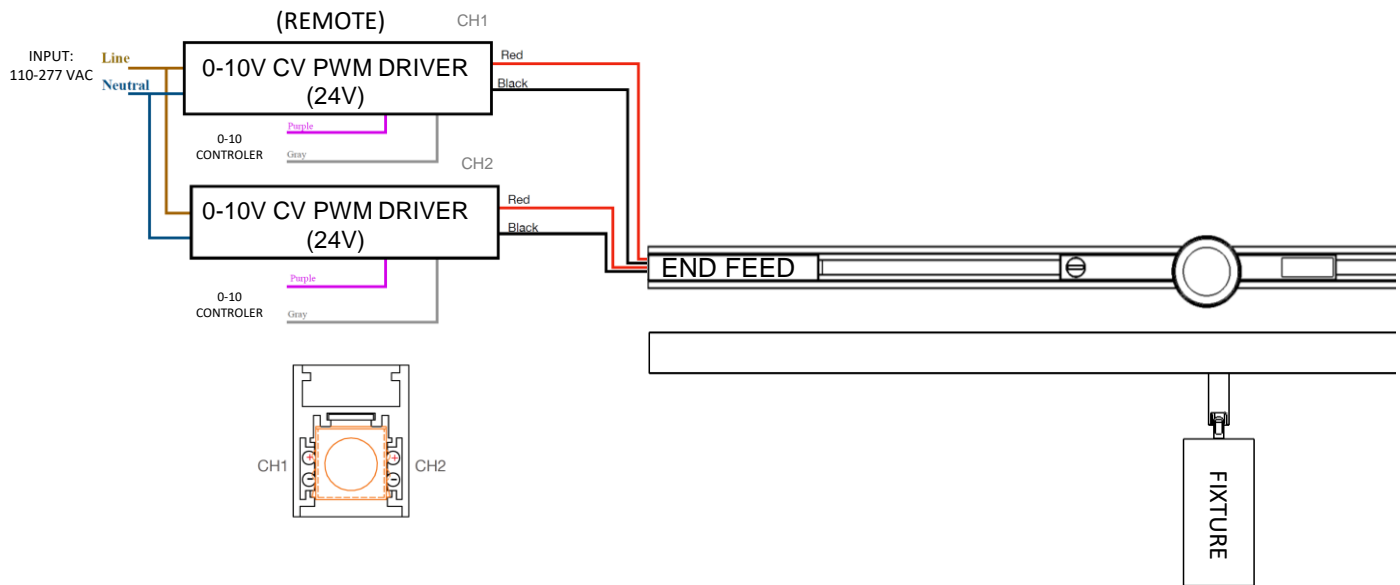
APERATURE(IN)	GEM20	GEML2	GEM4R	GEML4	GEL6R
	0.7	1	0.7	1	1

END FEED: Wiring Diagram

- **0-10V, Dali, ONE CIRCUIT**



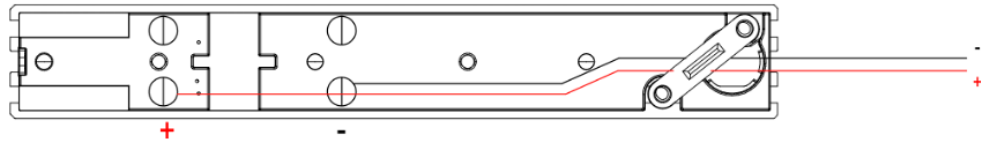
- **0-10V, Dali, TWO CIRCUIT**



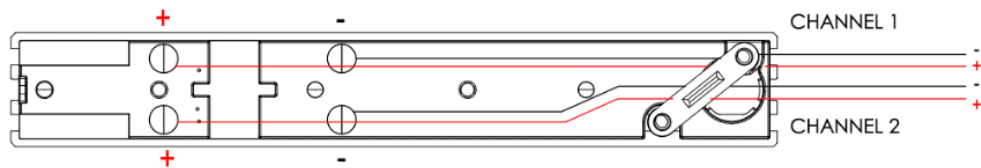
END FEED: Wiring Diagram



CHANNEL 1 MINI TRACK END FEED WIRING



CHANNEL 2 MINI TRACK END FEED WIRING



END FEED: Installation

